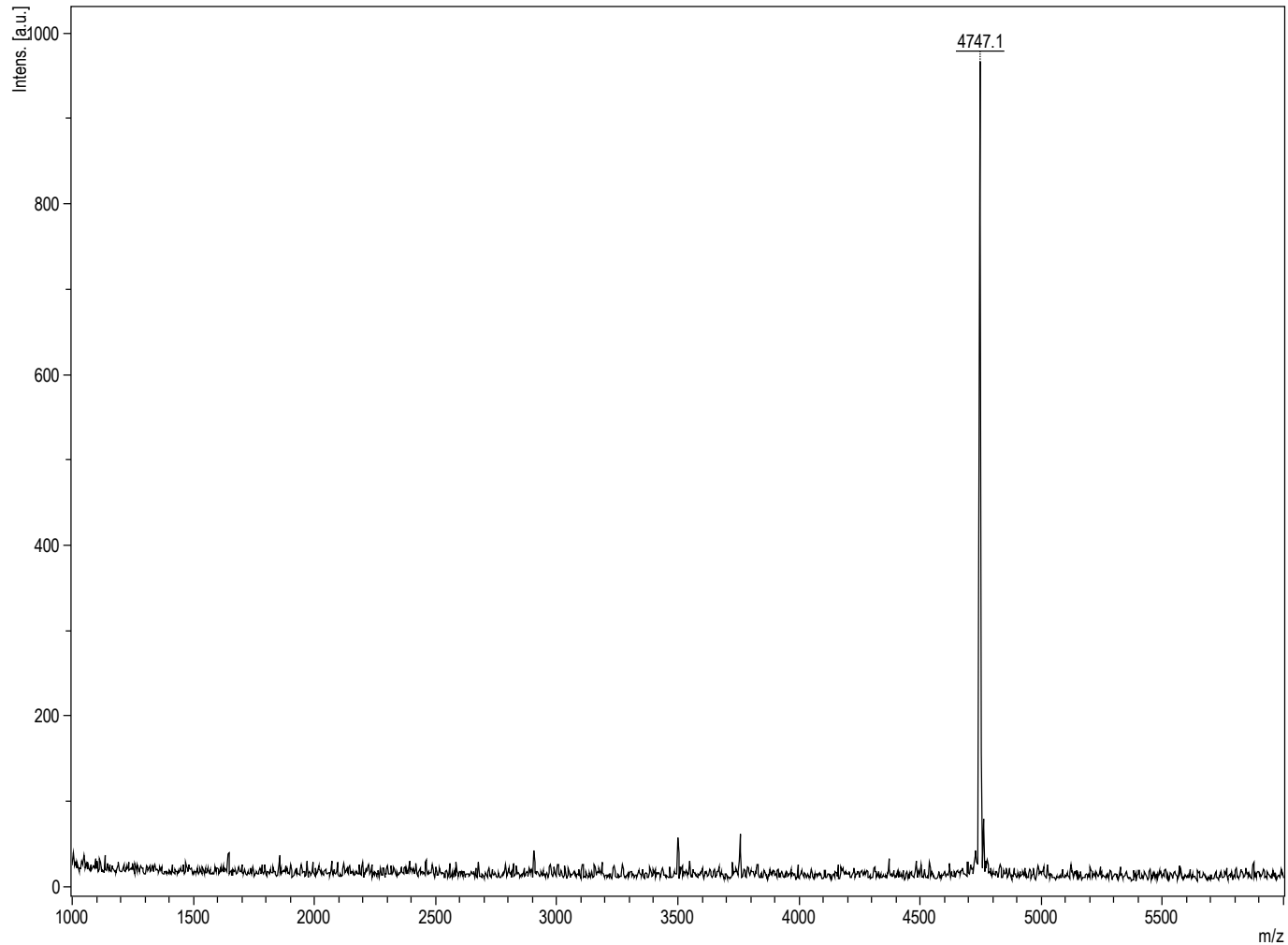


AP-1101, APP (669-711), N15, Uniformly Labeled



**For research use only. Not for use in humans.**

[www.rpeptide.com](http://www.rpeptide.com)

1050 Barber Creek • Bldg: 300 • Suite: 103 • Watkinsville • Georgia • 30677 • USA  
Tel 678-753-0747 • Fax 678-753-0746 • E-mail [sales@rpeptide.com](mailto:sales@rpeptide.com)