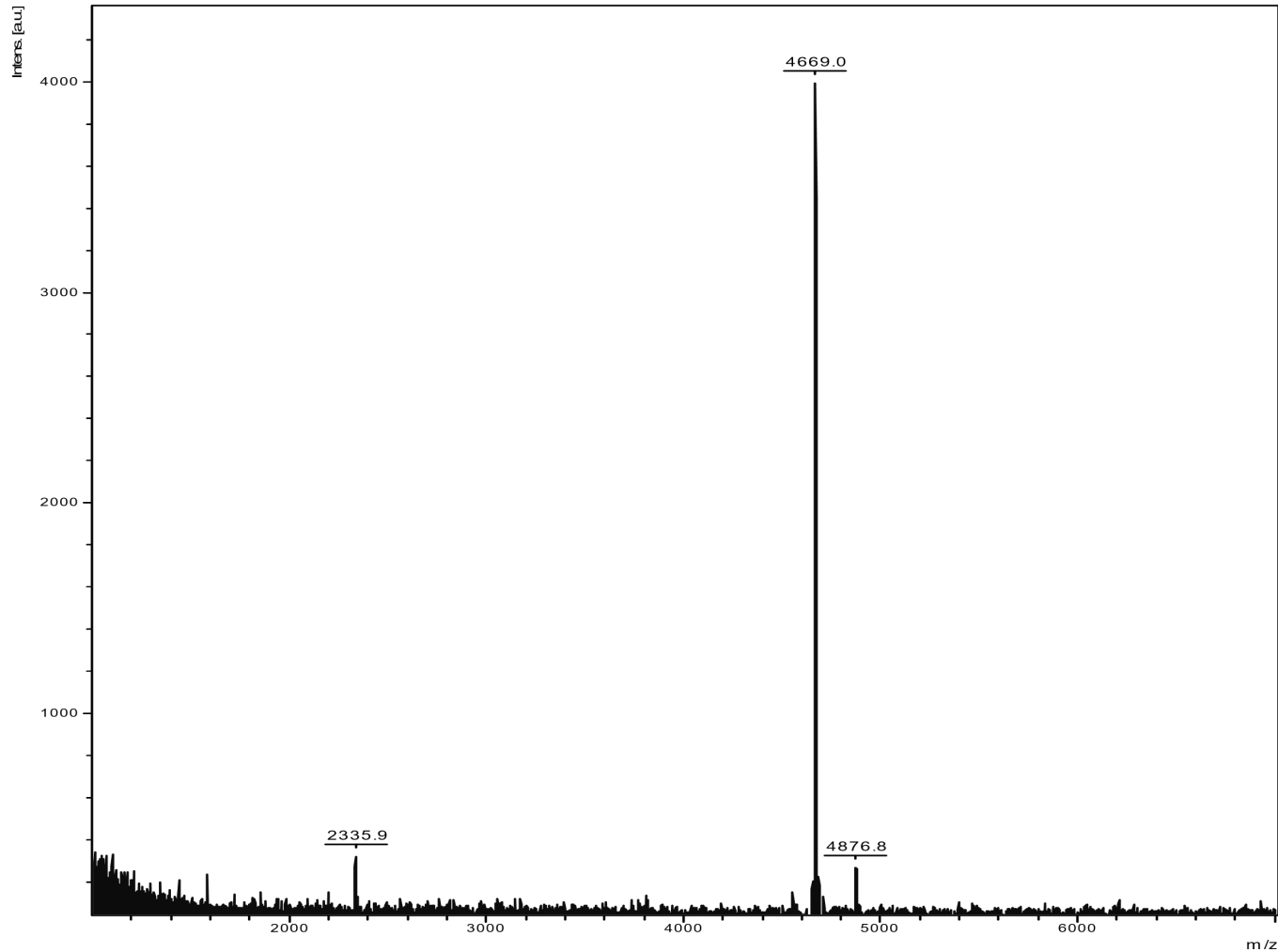


A-1107, N15 Beta-Amyloid (1-43), Uniformly Labeled



For research use only. Not for use in humans.

www.rpeptide.com

1050 Barber Creek • Bldg: 300 • Suite: 103 • Watkinsville • Georgia • 30677 • USA
Tel 678-753-0747 • Fax 678-753-0746 • E-mail sales@rpeptide.com