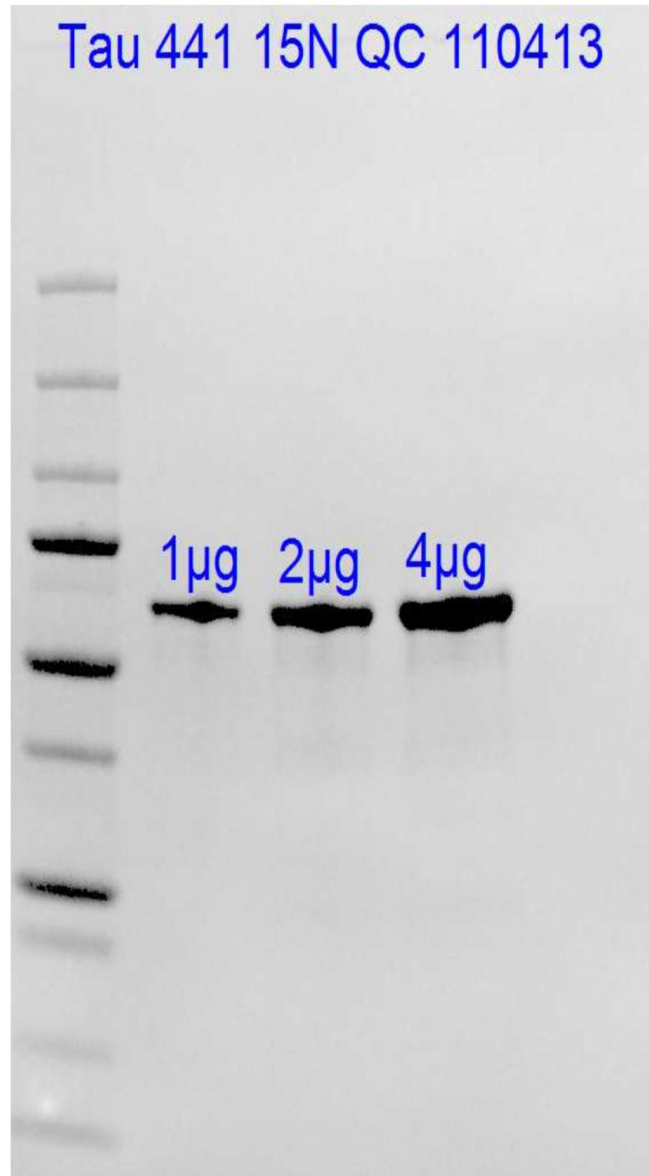


**T-1101; 15N Tau 441**

11/14/2013, 10:53 AM, Size: 572x818, Exp. n/a, Bin: 1x1, Modif. Yes, Disp BWG (4491, 23494, 0.25)  
File: Tau 441 15N QC 110413.tif at: C:\Users\rPeptide Lab\Desktop\rPeptide Lab Files\Tau441



MALDI Comparison of Tau 441 and N15 Labeled Tau 441

